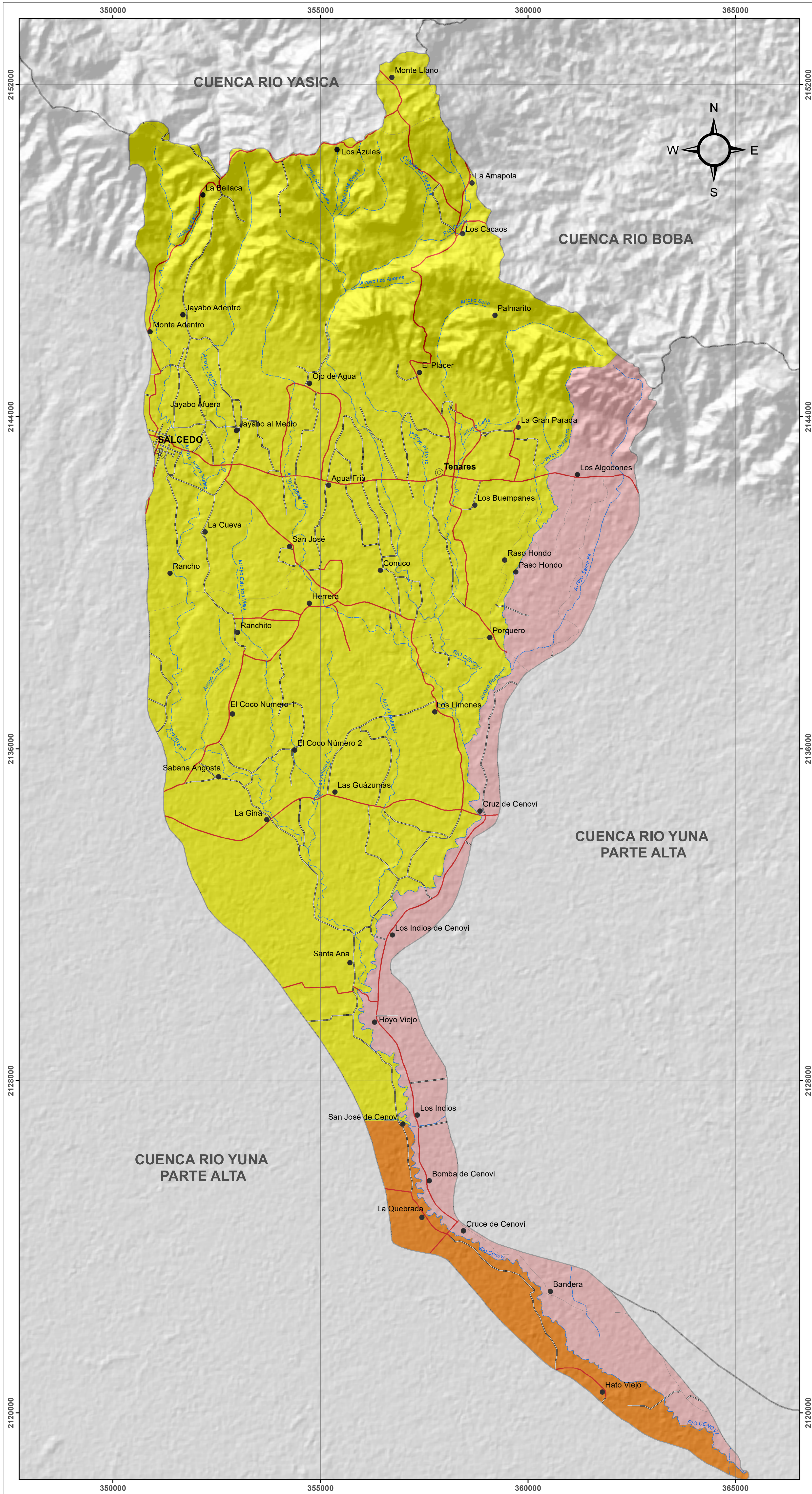


CUENCA CENOVI






DIVISION POLITICO - ADMINISTRATIVA







MINISTERIO DE MEDIO AMBIENTE Y RECURSOS NATURALES

Escala: 1:45,000

LEYENDA

Provincia	Km ²
 Duarte	32.21
 Hermanas Mirabal	170.70
 La Vega	10.22

SIMBOLOGÍA

-  Sección
-  Carretera Pavimentada transitable todo el Año
-  Carretera no Pavimentada transitable en tiempo Seco (vehículo todo terreno)
-  Carretera no Pavimentada transitable por todo tipo de vehículo
-  Ríos y Arroyos
-  Límite de Cuencas y Subcuencas



Edición: Febrero, 2019
Fuente: Límites ONE, Censo 2010.