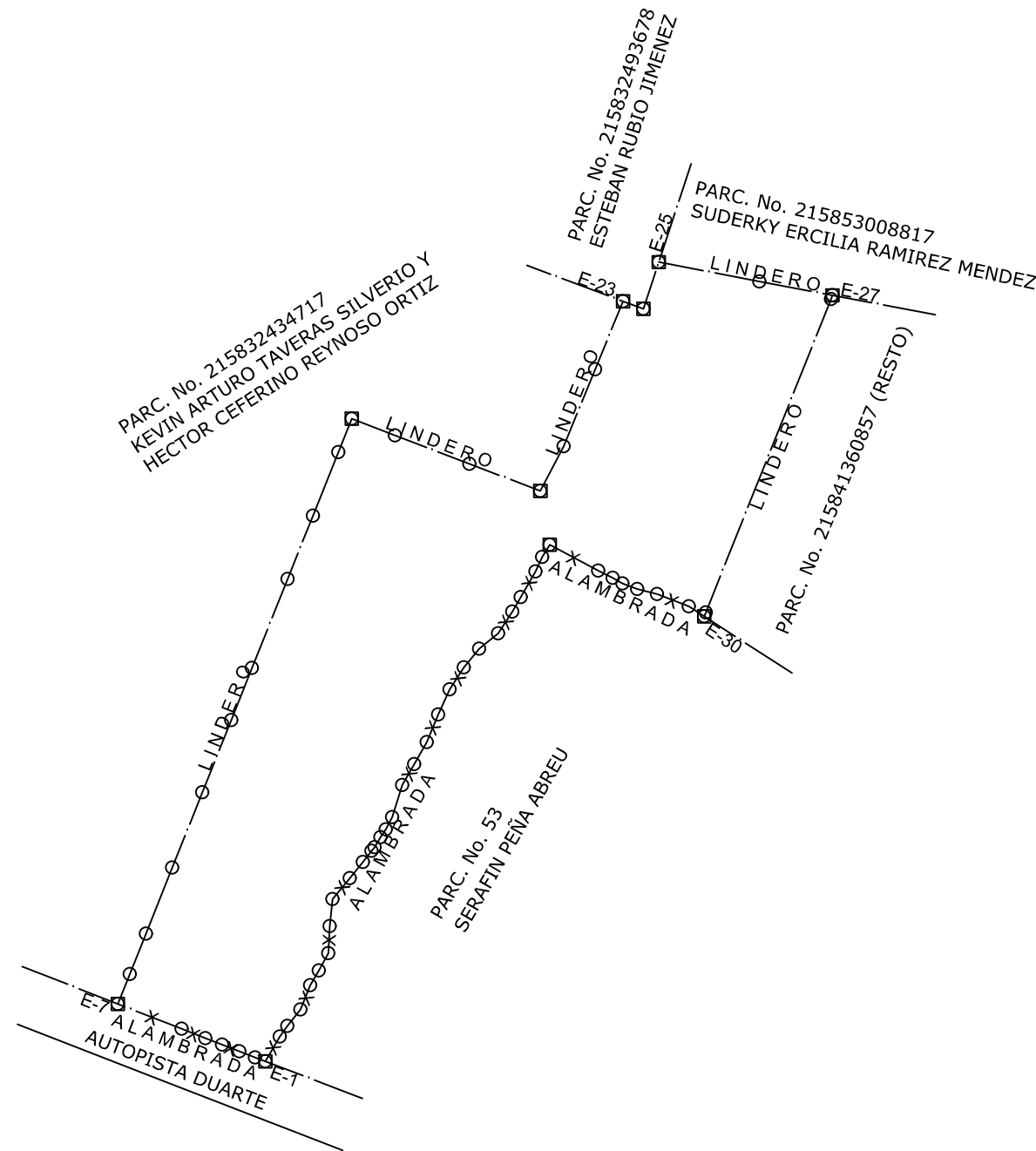
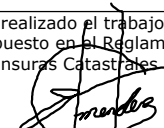


ZONA UTM 19 NORTE				
Est.	Rumbo	Dist.	Este. (X)	Norte (Y)
1	N69° 01'W	26.73m	253,228.88	2,180,545.76
2	N68° 50'W	40.69m	253,203.92	2,180,555.33
3	N68° 50'W	45.25m	253,165.98	2,180,570.02
4	N68° 50'W	43.61m	253,123.78	2,180,586.36
5	N68° 39'W	62.45m	253,083.11	2,180,602.11
6	N68° 40'W	166.90m	253,024.95	2,180,624.85
7	N21° 47'E	78.30m	252,869.48	2,180,685.54
8	N21° 47'E	105.87m	252,898.53	2,180,758.25
9	N21° 47'E	173.69m	252,937.81	2,180,856.57
10	N21° 47'E	197.30m	253,002.24	2,181,017.86
11	N21° 47'E	189.24m	253,075.44	2,181,201.08
12	N21° 47'E	137.19m	253,145.65	2,181,376.81
13	N21° 47'E	233.39m	253,196.55	2,181,504.21
14	N21° 47'E	165.93m	253,283.13	2,181,720.94
15	N21° 47'E	166.67m	253,344.69	2,181,875.03
16	N21° 47'E	87.97m	253,406.53	2,182,029.80
17	S69° 03'E	113.22m	253,439.16	2,182,111.49
18	S69° 03'E	193.74m	253,544.90	2,182,071.02
19	S69° 04'E	185.39m	253,725.84	2,182,001.77
20	N27° 31'E	122.83m	253,898.99	2,181,935.53
21	N22° 17'E	202.81m	253,955.75	2,182,044.46
22	N22° 17'E	178.85m	254,032.68	2,182,232.11
23	S69° 33'E	52.67m	254,100.51	2,182,397.60
24	N18° 13'E	120.06m	254,149.86	2,182,379.19
25	S79° 06'E	249.78m	254,187.38	2,182,493.23
26	S79° 17'E	181.29m	254,432.66	2,182,446.02
27	S21° 47'W	10.19m	254,610.79	2,182,412.31
28	S21° 47'W	822.02m	254,607.01	2,182,402.85
29	S21° 47'W	10.19m	254,302.04	2,181,639.50
30	N57° 06'W	44.98m	254,298.26	2,181,630.03
31	N68° 54'W	83.00m	254,260.49	2,181,654.47
32	N75° 49'W	49.70m	254,183.06	2,181,684.35
33	N69° 04'W	38.62m	254,134.87	2,181,696.53
34	N60° 05'W	26.90m	254,098.80	2,181,710.32
35	N63° 54'W	39.56m	254,075.48	2,181,723.74
36	N61° 52'W	134.18m	254,039.96	2,181,741.14
37	S31° 12'W	34.70m	253,921.63	2,181,804.41
38	S25° 06'W	39.15m	253,903.65	2,181,774.73
39	S29° 50'W	71.78m	253,887.04	2,181,739.27
40	S29° 50'W	41.17m	253,851.34	2,181,677.01
41	S33° 12'W	63.00m	253,830.86	2,181,641.30
42	S50° 53'W	59.90m	253,796.36	2,181,588.58
43	S39° 16'W	58.50m	253,749.89	2,181,550.79
44	S33° 01'W	64.17m	253,712.86	2,181,505.50
45	S24° 48'W	67.05m	253,677.90	2,181,451.69
46	S22° 08'W	72.75m	253,649.77	2,181,390.83
47	S29° 45'W	61.84m	253,622.36	2,181,323.44
48	S29° 45'W	58.98m	253,591.67	2,181,269.75
49	S17° 37'W	81.75m	253,562.40	2,181,218.55
50	S27° 52'W	33.40m	253,537.66	2,181,140.63
51	S32° 59'W	22.66m	253,522.05	2,181,111.10
52	S31° 10'W	28.65m	253,509.71	2,181,092.09
53	S37° 50'W	11.68m	253,494.88	2,181,067.58
54	S37° 50'W	34.38m	253,487.72	2,181,058.35
55	S39° 10'W	50.38m	253,466.63	2,181,031.20
56	S39° 10'W	66.43m	253,434.82	2,180,992.14
57	S6° 23'W	65.75m	253,392.86	2,180,940.62
58	S2° 38'W	65.90m	253,385.55	2,180,875.28
59	S28° 23'W	48.50m	253,382.53	2,180,809.45
60	S31° 07'W	41.70m	253,359.47	2,180,766.78
61	S21° 23'W	63.50m	253,337.92	2,180,731.08
62	S38° 49'W	51.75m	253,314.77	2,180,671.95
63	S35° 12'W	31.80m	253,282.33	2,180,631.63
64	S30° 23'W	69.43m	253,264.00	2,180,605.65



REPUBLICA DOMINICANA PODER JUDICIAL JURISDICCION INMOBILIARIA DIRECCION REGIONAL DE MENSURAS CATASTRALES DEPARTAMENTO NORTE	
PLANO INDIVIDUAL	
OPERACION: COMPROBACION DE AREAS	
DESIGNACION CATASTRAL POSICIONAL:	
DESIGNACIÓN CATASTRAL DE ORIGEN: PARC. No. 215841360857 (PARTE)	
DESIGNACIÓN TEMPORAL: PORCION No. 1	
PROVINCIA: MONTE CRISTI	
MUNICIPIO: GUAYUBIN	
SECCION:	
LUGAR: LA SOLITARIA	
REFERENCIA DE UBICACION:	
SUPERFICIE DE LA PARCELA: 1,073,125.34 m ²	ESCALA= 1: 15,000
LAMINA No. 01 / 01	
Certifico haber realizado el trabajo en el terreno conforme a lo dispuesto en el Reglamento General de Mensuras Catastrales	De conformidad con lo dispuesto en el Reglamento General de Mensuras Catastrales
 JAROLIN JOSÉ MENDEZ VASQUEZ AGRIMENSOR CÖDIA: 39259	DIRECTOR REGIONAL DE MENSURAS CATASTRALES DEPARTAMENTO NORTE



NOTA: ESTE LEVANTAMIENTO SE REALIZO MEDIANTE EL METODO DE COORDENADAS EN TIEMPO REAL, UTILIZANDO UN EQUIPO RTK.