

# VILLA B2

COHARC-STUDIO

## PROYECTO

SABANA EQUESTRIAN & RESIDENCES

### CONTENIDO:

DETALLE DE BAÑO Y COCINA

### PROPIETARIO:

INVERSIONES TROPICARIBE SA

### RESPONSABLE:

SALVADOR ANTONIO TERMINI GUZMAN

### DIS.ARQUITECTONICO

ARQ. PAMELA MALLEN  
CODIA: 29404

### DIS.ESTRUCTURAL

ING. AMERICO GUERRERO  
CODIA: 21105

### DIS.SANITARIO

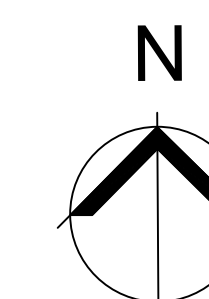
ING. AMERICO GUERRERO  
CODIA: 21105

### DIS.ELECTRICO

ING. SAMUEL LEONARDO RODRIGUEZ  
CODIA: 40836

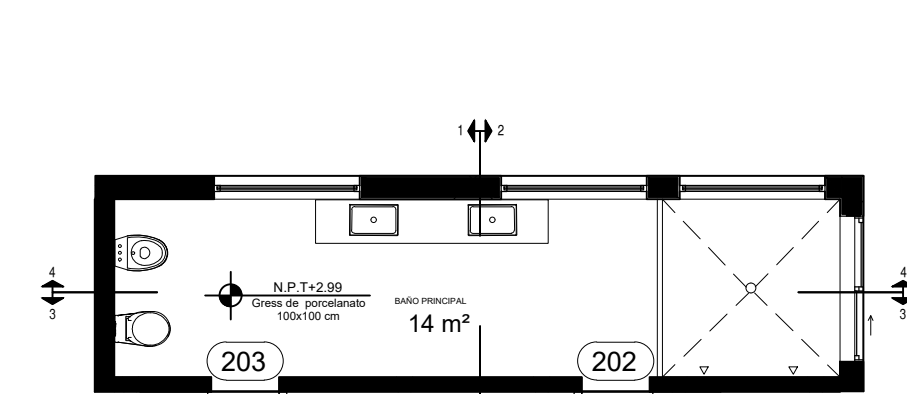
### DIBUJANTE

COHARC STUDIO

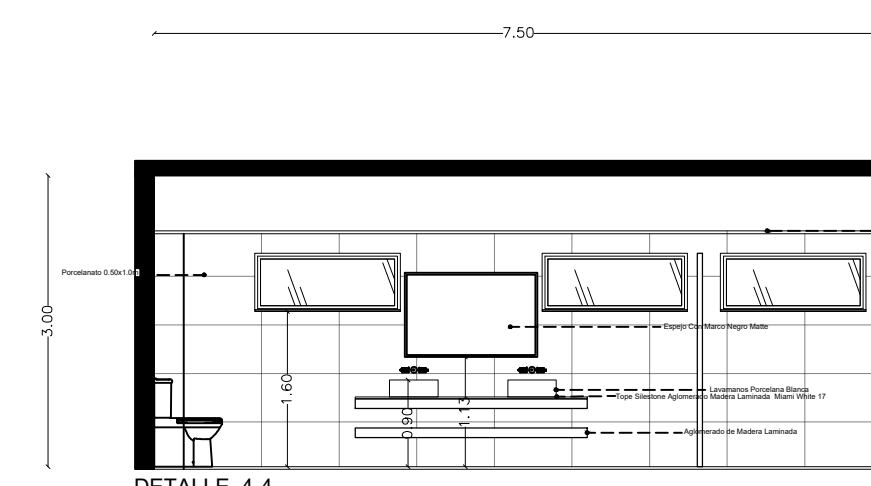


A-108

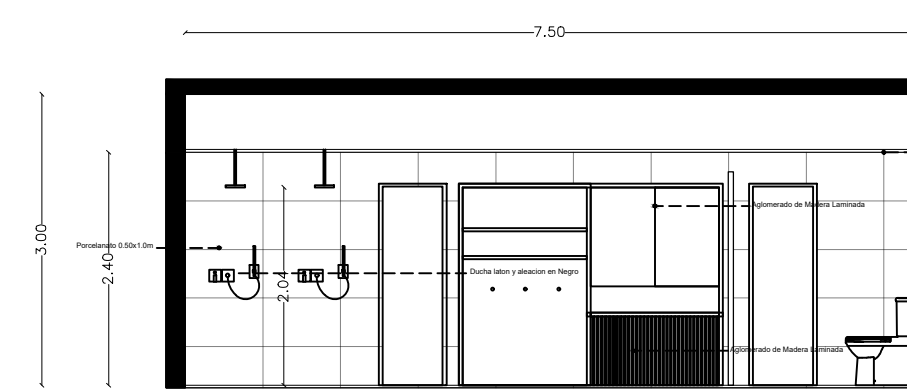
A-109



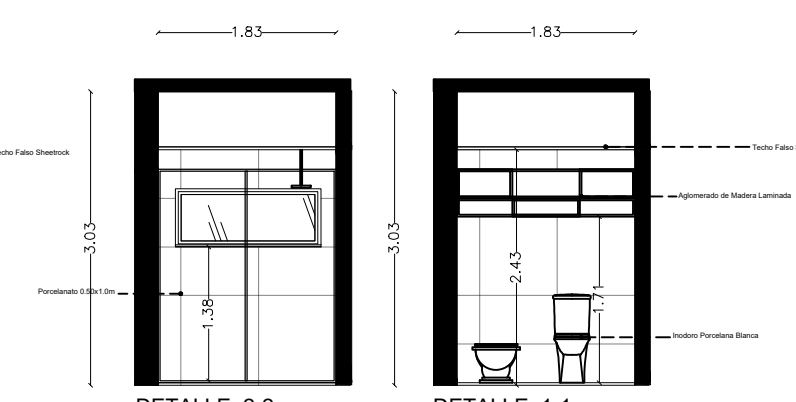
1 DETALLE BAÑO PRINCIPAL  
ESC. 1:40



DETALLE 4-4

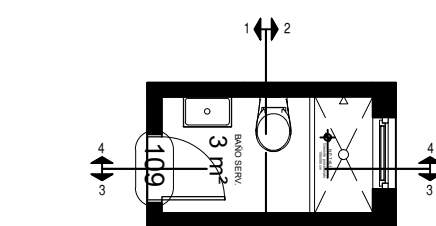


DETALLE 3-3

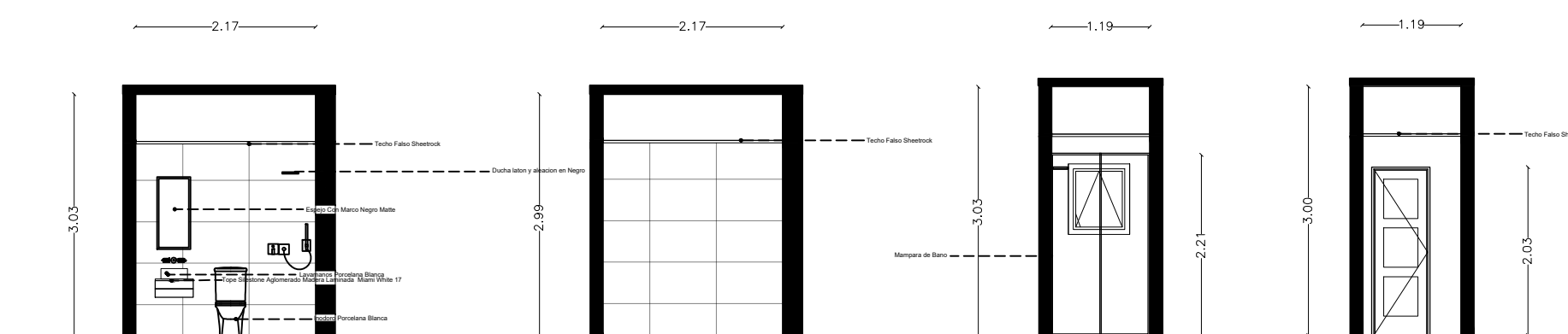


DETALLE 2-2

DETALLE 1-1



2 DETALLE BAÑO SERVICIO  
ESC. 1:40

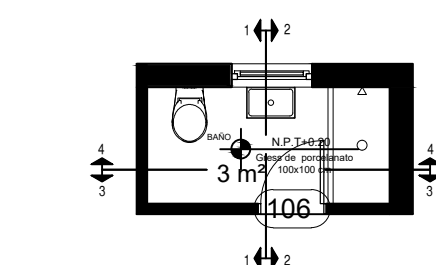


DETALLE 4-4

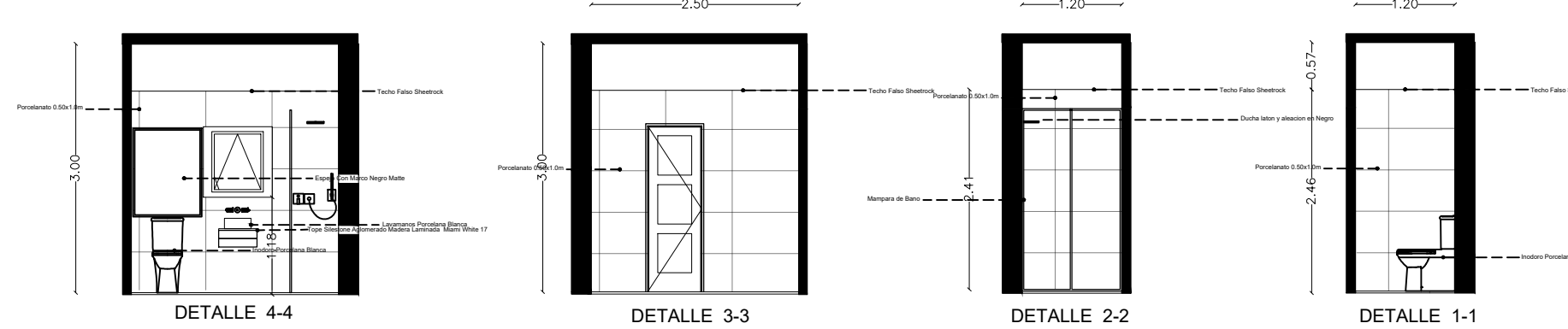
DETALLE 3-3

DETALLE 2-2

DETALLE 1-1



3 DETALLE BAÑO 3  
ESC. 1:40

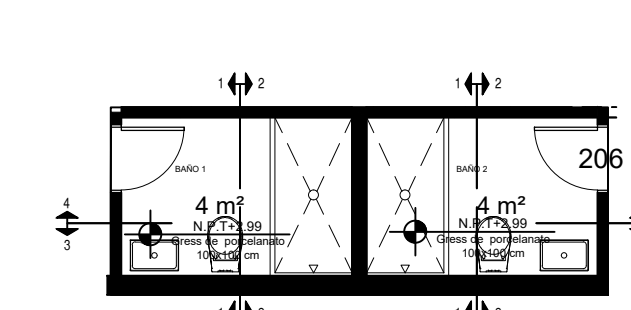


DETALLE 4-4

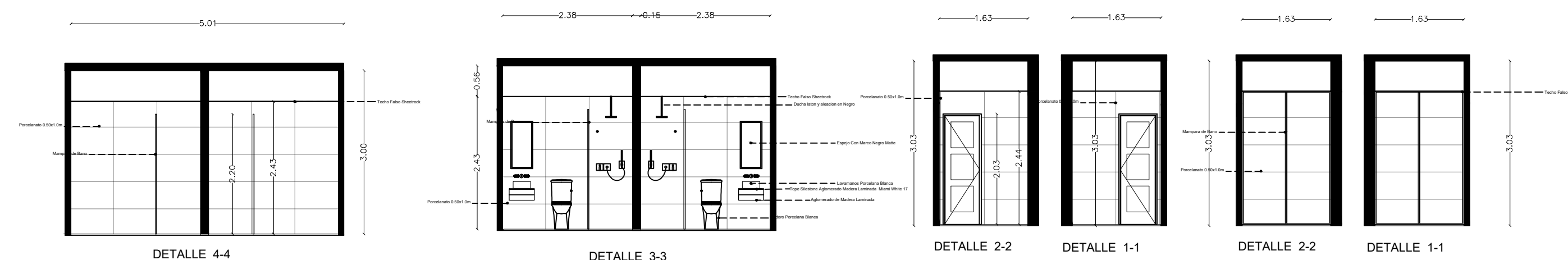
DETALLE 3-3

DETALLE 2-2

DETALLE 1-1



4 DETALLE BAÑO 1-2  
ESC. 1:40



DETALLE 4-4

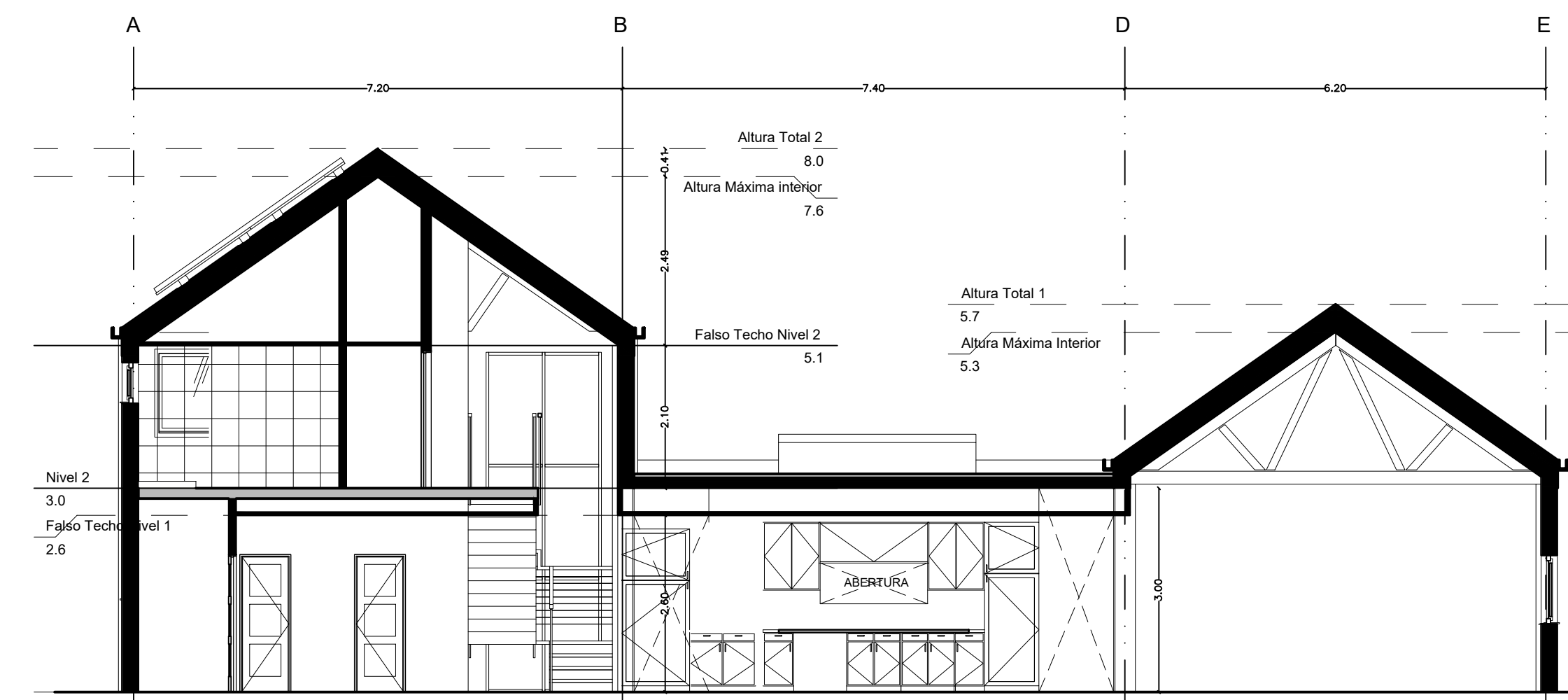
DETALLE 3-3

DETALLE 2-2

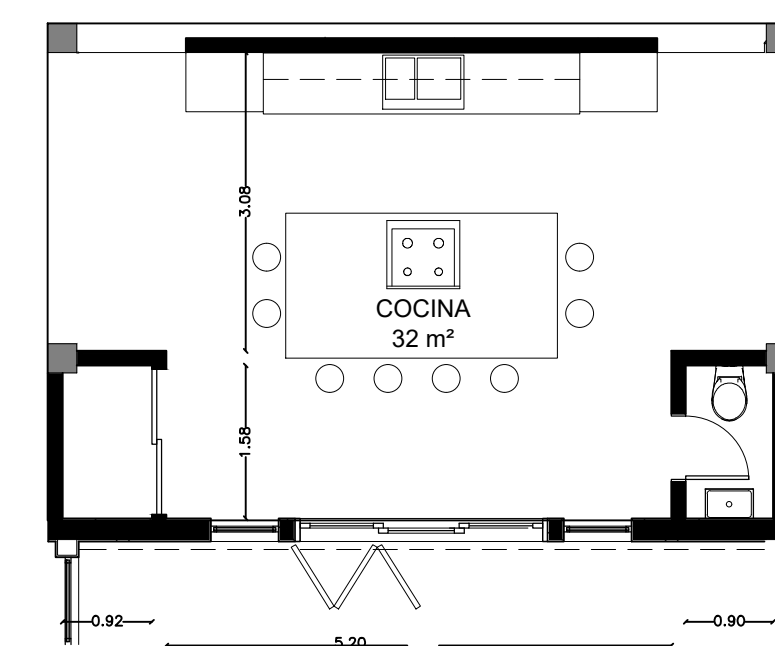
DETALLE 1-1

DETALLE 2-2

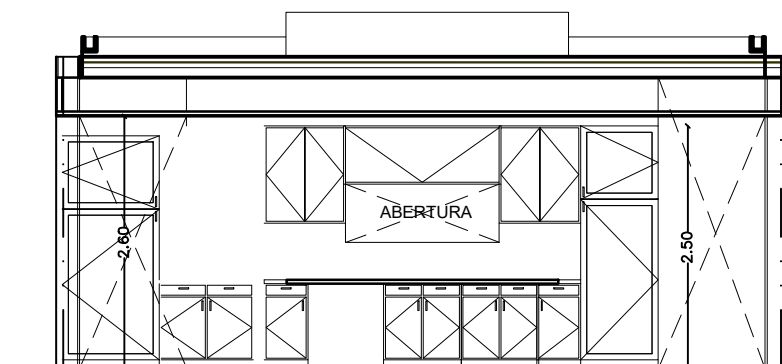
DETALLE 1-1



5 SECCION AREA COCINA  
ESC. 1:75



6 PLANTA ARQUITECTONICA - DIMENSIONADA COCINA  
ESC. 1:75



7 ELEVACION FRONTAL COCINA  
ESC. 1:75