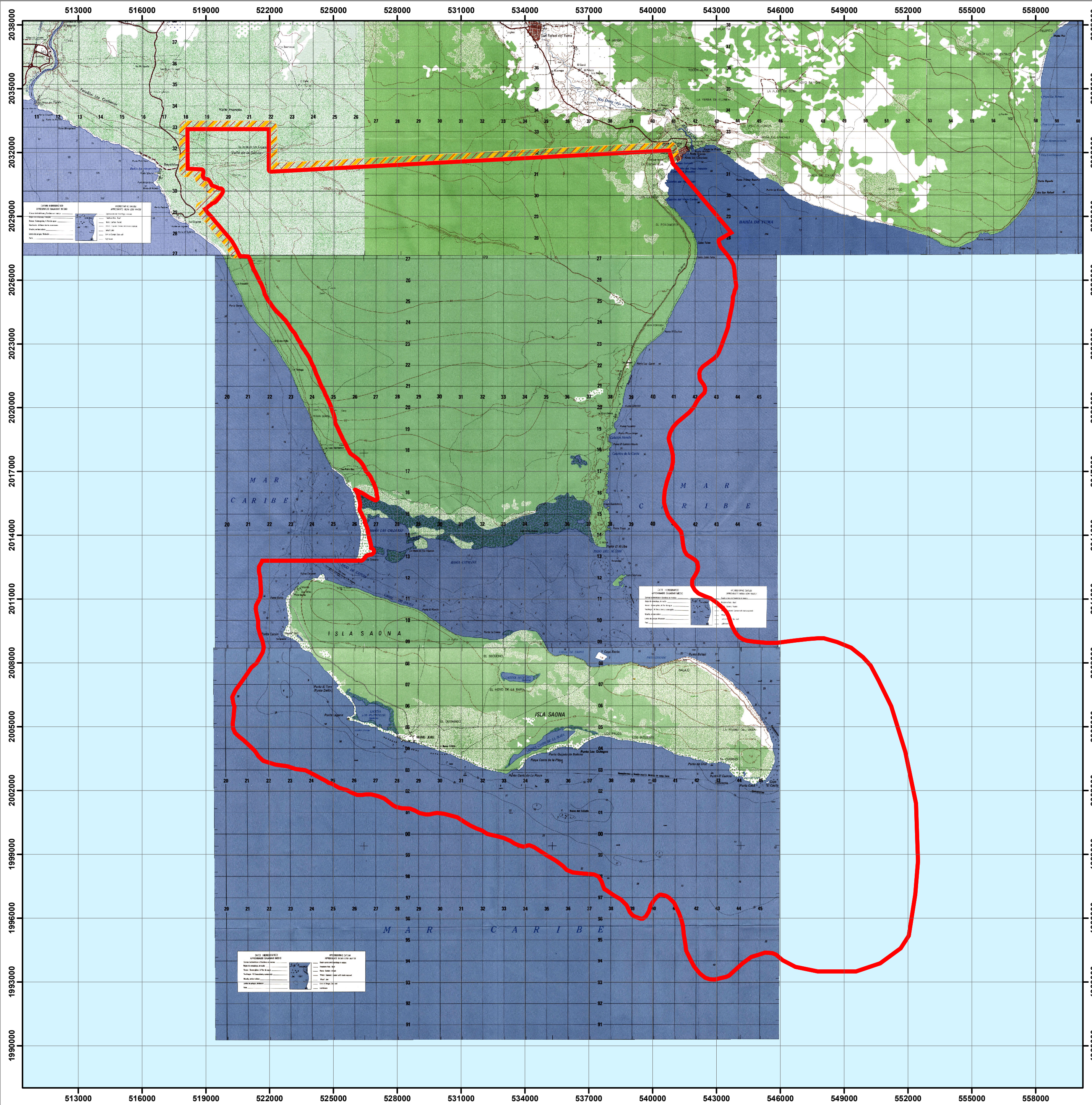


PARQUE NACIONAL

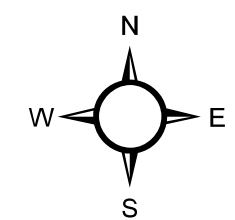


PARQUE NACIONAL COTUBANAMÁ (DEL ESTE)



LEY 202-04 (519-14)

MINISTERIO DE MEDIO AMBIENTE
Y RECURSOS NATURALES




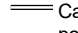

Escala: 1:135,800



LEYENDA

-  Límite del Área 795.08 KM²
-  Área de Amortiguamiento (300 Mts.)

SIMBOLOGÍA

-  Ríos y Arroyos
-  Carretera Pavimentada Transitable Todo el Año
-  Límite Internacional
-  Carretera no Pavimentada Transitable por Todo Tipo de Vehículo
-  Carretera no Pavimentada Transitable en Tiempo Seco (Vehículo Todo Terreno)

